

Care Instructions

1. Ensure guy ropes are out at all times during use.
2. Never pack your tent away wet. If you must take your tent down when wet, ensure that it is dried completely as soon as possible to prevent mildew forming
3. If mildew does form on your tent, wash off with warm water and a soft brush to prevent further growth, do not use soap or detergents
4. Do not use an open flame inside your tent. The fabric has been treated with a fire retardant but is in no way fire proof
5. Clean all pegs and poles before storing
6. This tent is not designed to withstand storm conditions. During strong winds, it is recommended that the tent be taken down
7. Do not leave your tent pitched unnecessarily for extended periods of time, UV light damages the fly and will shorten the life of your tent

Condensation

It is important that lower vents are opened at all times to reduce the risk of condensation. During humid or damp conditions, it is recommended that inner door covers are opened to expose the mesh layer to allow additional airflow throughout your tent.

Do not use foam swabs or non bonded mats directly on the tent floor. This will cause condensation between the mat and floor and if not dried out can lead to mildew forming.

4 Year Tent Guarantee

Please take time to read about the protection we offer you

All our tents come with a guarantee designed to protect you as our valued customer. Flow Imports Ltd, the makers of Zempire Camping Equipment tents, will repair or replace this tent, at their discretion, should it fail due to faulty materials or manufacture for a period of 4 years from the date of sale.

The Guarantee is subject to the following conditions:

1. The Guarantee only applies to an original purchaser who purchased this tent from an approved retail outlet
2. The Guarantee does not apply if the tent has been used for anything other than reasonable personal camping use. Commercial use (e.g. rental) or continuous use as a residence are expressly excluded
3. Damage due to normal wear and tear, accident, acts of God, negligence (other than by Flow Imports Ltd), failure by the purchaser to ensure instructions for setting up and care are observed, deterioration due to abnormal exposure to ultraviolet light, insect or mildew attack, or any other cause reasonably beyond the control of Flow Imports Ltd are not covered
4. If redress is sought under the terms of this Guarantee, then the tent must be returned by the purchaser to the outlet from where it was purchased within the Guarantee period, in a clean, dry state and with proof of purchase
5. All transport costs and any other indirect costs are excluded from the Guarantee.
6. Flow Imports Ltd reserves the right to make a reasonable charge for repairs which it determines are not within the scope of the Guarantee
7. The Guarantee does not limit, modify or exclude any rights under any law if doing so would contravene that law or make any part of this Guarantee invalid. However, Flow Imports Ltd:
 - a) excludes (to the extent permitted by applicable law) all conditions and warranties that might otherwise be implied; and
 - b) limits its liability for breach of any such condition or Guarantee that it cannot exclude together with its liability under the Guarantee, to repairing or replacing the Goods or paying the cost of having the Goods repaired or replaced (at Flow Imports' option).

This tent has been made with meticulous care and attention to detail. Providing it's properly looked after and correctly stored, it will help you enjoy all that nature has to offer for years to come.

Get out more - you owe it to yourself.

For a detailed description of all the features and specifications of this product please visit our website.

WWW.ZEMPIRECAMPING.COM

ROADIE 6 PRO
zempire CAMPING EQUIPMENT PRO SERIES

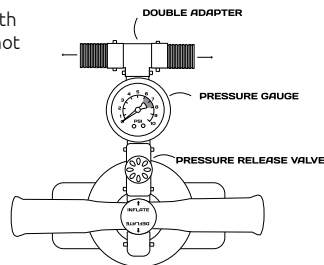


- 1 Test Run**
Practice pitching your Roadie at home to ensure you understand the process
- 2 Pick A Site**
When finding a site for your Roadie, try to find an area that is sheltered, flat, and free from sharp objects. If possible position your tent with the front door facing away from the prevailing wind. Also try not to pitch your tent under trees as falling branches can damage the tent and falling sap can damage the fabric.

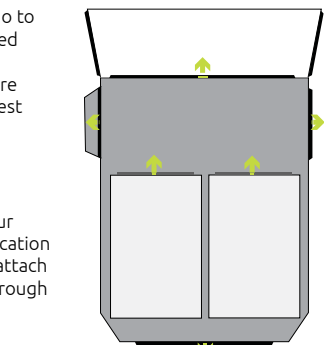
- 3 Unpacking**
When you take your Roadie out for the first time take a moment to see how it is packed or take a photo on your phone. This will help you when it comes to packing your tent away. Separate and identify the different parts in your tent. The package should include the following

- Tent Fly
- Brow Pole
- Pump
- Pressure gauge
- Guy Ropes (Pre Attached)
- Pegs
- Pressure release valve

Assemble the aluminium brow pole. The sections are joined together with shock cord so just needs slotting together. Ensure that the sections do not snap together and each section inserts fully into the adjoining pole



- 4 Pump Setup**
Your Zempire ® double action pump includes a pressure gauge and pressure release valve to ensure that the poles are inflated to the correct level. A double adapter is also included that allows two poles to be inflated simultaneously. The pump accessories should be assembled in the following configuration:



- 5 Layout**
Unroll the Roadie fly with the floor facing down. The large door with logo to the side should be located furthest away from the vehicle. You will need to allow 4.5m beside your vehicle to allow sufficient space to pitch your Roadie. Peg out the 4 corners of the sewn in ground sheet ensuring there is significant tension between and the floor sits as flat as possible. For best results pegs should be angled away from your tent at 45°

6 Attachment Options:

Kador Strips

Your Roadie has a number of options to attach to your vehicle. Your roadie has 2 thickness of Kador strip attach. Depending on your location and vehicle you should use either the 7mm or the 9.5mm strip to attach to your rail. Unzip the Kador strips from your roadie and thread through the rail on your vehicle.

Velcro® Strips

Using the pre attached Velcro® tab connect to the roof bars on your vehicle

Pole & Clamp

Slide the pole into the sleeve at the top of the rear section of your Roadie. Place the pole and fabric into the gutter on the vehicle and use the clamps to secure at both ends and in the centre

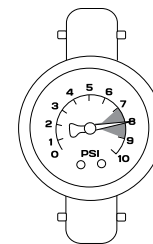
- 7 Airflow**
To enable significant air to enter tent during the pitching process, all door and window covers should be opened. It is important that the mesh doors themselves remain closed during the pitching process to ensure the tent holds its correct shape during inflation and is not over tightened causing damage.

8 Boston Valve Attachment

The external inflation valves are located under the rain sock on one side of each pole length. Before inflating, remove the valve cap (A) and screw the master valve (B) into the threaded section attached to the poles. For deflation simply unscrew once again the master valve so the air can escape. It is important that the valve is not cross threaded and is firmly tightened.



- 9 Inflation**
Working from the front of the tent to the rear, inflate each tube to between 7 and 9 PSI. The pressure release valve will "hiss" when 9 PSI is reached. It is important not to over inflate the tubes. It is recommended that during very hot weather 7 PSI is used to provide room for expansion during the day. In cooler or windier conditions 9 PSI is recommended. As each pole inflates it may be necessary to support the centre of the pole until they assume their correct shape. It is also a good time to ensure that the base of each pole is sitting correctly on the Velcro patches of the tent floor. Poles can sometimes move off the Velcro during the pitching process.



- 10 Setting The Floor**
It may be necessary to align the base of each pole so that the floor sits flat and taught. You may also need to re align the corner pegging points so the floor sits flat.

- 11 Pegging**
Peg the remaining peg loops around the tent. Durable steel pegs are included with your tent which will be suitable for the majority of conditions. However, if you are camped at a rocky or loose sandy location it may pay to purchase more specialized pegs. A range of specialized Zempire® Pegs are available.

- 12 Brow Pole**
Insert the brow pole through the pole sleeve that runs across the side canopy. Insert each end into the holders sewn onto the pole cover on each side of the canopy.

- 13 Anchor Fins**
Anchor fins are located at each end of your tent. These webbing straps are essential for the stability of your tent. They should be firmly pegged out at a 45° angle. In windy conditions or when camping soggy ground it may pay to double peg the Steel "O" rings at the base of each webbing. Anchor webbings should be used at all times.

- 14 Guy Lines**
Guy lines are pre-attached on all Zempire® tents. It is recommended that guy lines are used at all times. It is important not to over tighten guy lines. They should sit taught but should not distort the shape of the tent.

- 15 Inner Pods**
Optional inner pods are available to purchase. The attachments for the innerpods are colour coded for easy attachment. Right hand side or left hand side options are available.

Deflation

- Close all the mesh doors leaving the covers open to allow air to escape the tent
- Loosen off the inner pod webbing straps (if added as optional extra)
- Detach the Roadie from your vehicle
- Unpeg all guy ropes and roll up to ensure they do not get tangled during packing
- Unpeg the anchor fin webbing straps
- Unpeg the peg points excluding the 4 corners.
- Clean and dry pegs before storing in the bag
- Unscrew the master valves on each pole. Wait for all the air to be expelled
- Unpeg the 4 corners of the tent, clean and pack the pegs
- Lay the carry bag at one end of the tent. Fold the tent to 2/3s of the length of the bag. The tent should be folded from the "non-valve" side to the "valve-side" to help expel the final amount of air from the tubes.
- Place the Pole, Pump, and Peg bags on top of the folded tent at the bedroom end. Roll towards the door end of the tent. It may take more than one roll to expel all the air out of the tent.
- Using the webbing straps tension the tent and stand on its end.
- Pull the Carrybag over the tent, tipping the tent over and tensioning the draw cord.
- The Carrybag is over sized to ensure easy packing.

UV Degradation

Tent fabrics can be weakened from prolonged exposure to sunlight. Under normal holiday use your Zempire ® tent will give you many years of camping enjoyment, but use for extended periods of strong sunlight will cause degradation. It is recommended that during periods of strong sunlight a Zempire ® Roof Cover is used to help protect from UV damage. UV Degradation is not covered under warranty. The warranty does not cover permanent sites, displays or for commercial purposes.