

PITCHING INSTRUCTIONS

1. Test Run

Practice pitching your shelter at home to ensure you understand the process.

2. Pick A Site

When finding a site for your shelter, try to find an area that is sheltered, flat, and free from sharp objects. Try not to pitch your shelter under trees as falling branches can damage the shelter and falling sap can damage the fabric.

3. Unpacking

When you take your Shelter out for the first time, take a moment to see how it is packed or take a photo on your phone. This will help you when it comes to packing your shelter away. Separate and identify the different parts. The package should include the following:

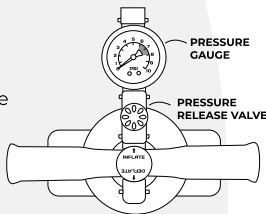
- Shelter Canopy
- 4x Fiberglass Brow Poles
- Guy Ropes (Pre-attached)
- Pegs
- Pump
- Pressure release valve
- Pressure gauge
- Zip-on Deluxe Wall

4. Pole Setup

Assemble the 4 fiberglass poles. The sections are joined together with shock cord, so they just need slotting together. Ensure that the poles do not snap together. It is important that the poles are fully inserted into the ferrules. If not connected correctly, they can cause damage when tensioned.

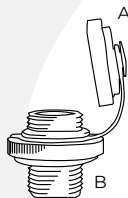
5. Pump Setup

Your ZEMPIRE® Pro Series Pump included with your tent comes with a pressure gauge and pressure release valve to ensure that the poles are inflated to the correct level. The pump switches between two modes. Double action mode allows you to add high volume at low pressure and is ideal for the first half of inflation. Single action mode offers low volume at high pressure and enables you to get the last few PSI into the tubes easily. The pump accessories should be assembled in the following configuration:



6. Layout

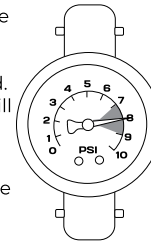
Unroll the shelter and ensure that all webbing guide straps are connected to the steel "O" rings in each corner. There should be 5 webbing straps in total, one for each side of the shelter and one additional length running diagonally across the center. Peg each corner so that all webbing straps are taut and the shelter sits square. It is important that the shelter is not skewed, as this will make attaching the walls difficult and could affect stability. Pegs should be angled away from your tent at 45°.



7. Boston Valve Attachment

The external inflation valve is located under the rain sock on one corner of the shelter. Before inflating, remove the valve cap (A) and screw the master

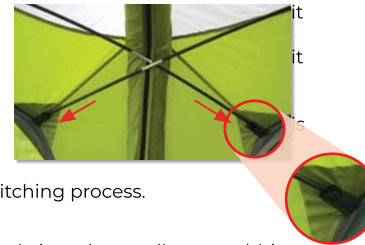
valve (B) into the threaded section attached to the poles. For deflation, simply unscrew the master valve so air can escape. It is important that the valve is not cross threaded and is firmly tightened. Make sure no fabric is stuck in the valve, as this will cause air to leak.



8. Inflation

Inflate the main cross tube to 7-9 PSI. The pressure release valve will "hiss" when 9 PSI is reached. It is important not to over inflate the tubes. It is recommended that during very hot weather 7 PSI is used to provide room for expansion during the day. In cooler or windier conditions 9 PSI is recommended.

As the pole inflates may be necessary to support the center of the pole until assumes the correct shape. It is also a good time to ensure that the base of each pole sitting correctly on its Velcro patches. Poles can sometimes move off the Velcro during the pitching process.



9. Brow Poles

Insert the end of one fiberglass pole into the small grey webbing pocket found halfway up the side of each door. Allow the pole to bow downwards and insert the other end of the pole into the pocket on the opposite side of the shelter. Lift the pole upwards so that it aligns with the seam above the door. Secure the pole using the Velcro tabs. Repeat with the 3 remaining poles. Note that the poles should cross over one another as pictured.

10. Pegging

Peg the remaining peg loops on either side of each door. The wall panels should sit at right angles to each other following the line of the webbing guide straps. Durable steel pegs are included with your tent, which will be suitable for the majority of conditions. However, if you are in a rocky or loose sandy location it may pay to purchase more specialized pegs. A range of specialized ZEMPIRE® Pegs are available.

11. Webbing Straps

Now that the shelter is fully erected, the webbing guide straps can be detached from one end and folded into the mesh pocket found at the sewn end. This prevents them from becoming a tripping hazard. The straps are not completely detachable to ensure they do not get misplaced. It is important to reconnect these webbing straps before deflating your shelter.

12. Anchor Guy Ropes

It is important that the anchor guy ropes attached at each corner are used at all times. It is important not to over-tighten the guy ropes. They should sit taut but should not distort the shape of the shelter. 4 yellow sand pegs are included with your shelter and can be used for the anchor guys in softer or sandy ground.

13. Zip-on Wall

Your shelter includes one zip-on wall. When attaching the wall, it may be necessary to re-peg the corners to ensure the wall is not over tensioned. Too much tension can damage the zips. It may also be helpful to leave the wall attached when packing the shelter to ensure the correct tension is applied when setting up the next time. The wall zipper has twin zip pullers to allow either side of the wall to be rolled back as a door.

14. Deflation

- Remove the fiberglass brow poles from each side of the shelter and place them in the pole bag.
- Unpeg all guy ropes and roll up to ensure they do not get tangled during packing.
- Unpeg the peg points excluding the 4 corners. Clean and dry pegs before storing in the bag.
- Unscrew the master valve on the air frame. Wait for all the air to be expelled.
- Unpeg the 4 corners of the shelter, clean and pack the pegs.
- Roll each leg of the air frame towards the center (excluding the valve end) to expel any remaining air, then unroll.
- Turn shelter upside down and fold the legs into center.
- Lay the carry bag at the valve end of the shelter. Fold the shelter to 2/3s of the length of the bag.
- Place the pump, peg bag and awning poles on top of the folded shelter at the end opposite the valve.
- Now roll the tent from that "non-valve side" end toward the valve.
- Use the supplied webbing straps (x2) to secure the rolled shelter and tension it so that it is firmly packed.
- Place the rolled shelter in carry bag, zip closed and tension the compression straps.

Please turn page for Care Instructions and Warranty.



UV Degradation

Shelter fabrics can be weakened by prolonged exposure to sunlight. Under normal holiday use, your ZEMPIRE® Shelter will give you many years of camping enjoyment. However, extended use in strong sunlight will cause degradation. It is recommended that during periods of strong sunlight a ZEMPIRE® Roof Cover is used to help protect from UV damage. UV degradation is not covered under warranty. The warranty does not cover permanent sites, displays or commercial use.

WARNING
KEEP ALL FLAME AND HEAT
SOURCES AWAY FROM THIS
TENT FABRIC

For a detailed description of all the features and specifications of this product please visit our website.

WWW.ZEMPIRECAMPING.COM

Designed and tested in New Zealand. Made with care in China.

WARRANTY & CARE

2 Year Shelter Guarantee

Please take time to read about the protection we offer you.

All our shelters come with a guarantee designed to protect you as our valued customer. Flow Imports Ltd., the makers of ZEMPIRE® Camping Equipment shelters, will repair or replace this shelter, at their discretion, should it fail due to faulty materials or manufacture for a period of 2 years from the date of sale.

The Guarantee is subject to the following conditions:

1. The Guarantee only applies to an original purchaser who purchased this shelter from an approved retail outlet.
2. The Guarantee does not apply if the shelter has been used for anything other than reasonable personal camping use. Commercial use (e.g. rental) or continuous use as a residence are expressly excluded.
3. Damage due to normal wear and tear, accident, acts of God, negligence (other than by Flow Imports Ltd.), failure by the purchaser to ensure instructions for setting up and care are observed, deterioration due to abnormal exposure to ultraviolet light, insect or mildew attack, or any other cause reasonably beyond the control of Flow Imports Ltd. are not covered.
4. If redress is sought under the terms of this Guarantee, then the shelter must be returned by the purchaser to the outlet from where it was purchased within the Guarantee period, in a clean, dry state and with proof of purchase.
5. All transport costs and any other indirect costs are excluded from the Guarantee.
6. Flow Imports Ltd. reserves the right to make a reasonable charge for repairs which it determines are not within the scope of the Guarantee.
7. The Guarantee does not limit, modify or exclude any rights under any law if doing so would contravene that law or make any part of this Guarantee invalid. However, Flow Imports Ltd.:
 - a) excludes (to the extent permitted by applicable law) all conditions and warranties that might otherwise be implied; and
 - b) limits its liability for breach of any such condition or Guarantee that it cannot exclude together with its liability under the Guarantee, to repairing or replacing the goods or paying the cost of having the goods repaired or replaced (at Flow Imports' option).

This shelter has been made with meticulous care and attention to detail. Providing it's properly looked after and correctly stored, it will help you enjoy all that nature has to offer for years to come.

Care Instructions

1. Ensure guy ropes are out at all times during use.
2. Never pack your shelter away wet. If you must take your shelter down when wet, ensure that it is dried completely as soon as possible to prevent mildew forming.
3. If mildew does form on your shelter, wash off with warm water and a soft brush to prevent further growth, do not use soap or detergents.
4. Do not use an open flame inside your shelter. The fabric has been treated with a fire retardant but is in no way fire-proof.
5. Clean all pegs and poles before storing.
6. This shelter is not designed to withstand storm conditions. During strong winds, it is recommended that the shelter be taken down.
7. Do not leave your shelter pitched unnecessarily for extended periods of time, UV light damages the fly and will shorten the life of your shelter.

Get out more – you owe it to yourself!



zempire®
CAMPING EQUIPMENT