



**1**



**2** Pull upwards to unfold the frame.



**4**



**3**



**5**



**6**

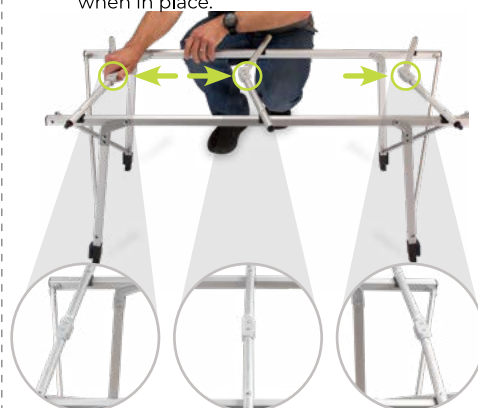


**7** Flip over.



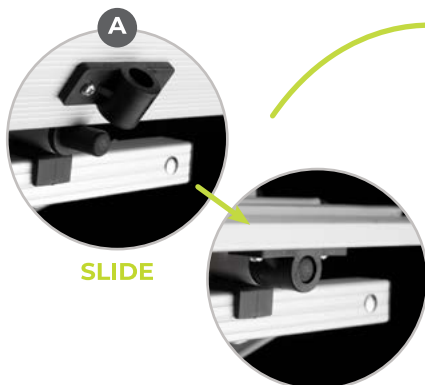
**8**

Straighten support poles, and it clicks when in place.

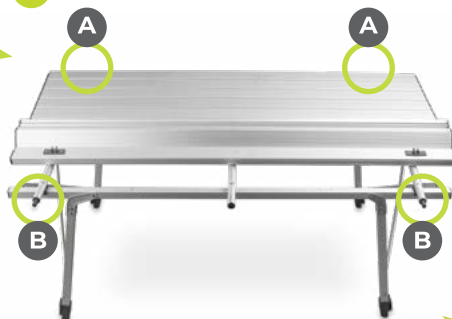


**9**

Place the tabletop on frame and slide section **A** onto the end of the support pole.

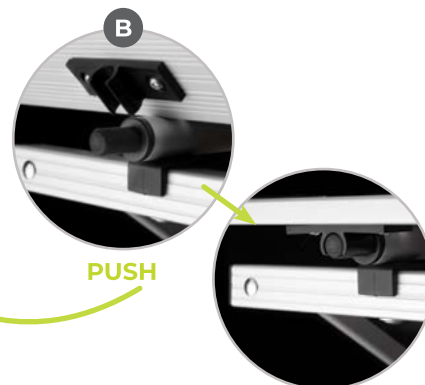


**10** Unfold the tabletop over the frame.



**11**

Push section **B** onto the support pole as pictured.

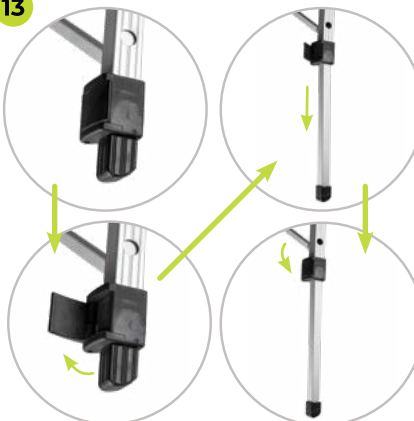


**12**

To change height follow step 13.



**13**



**14**

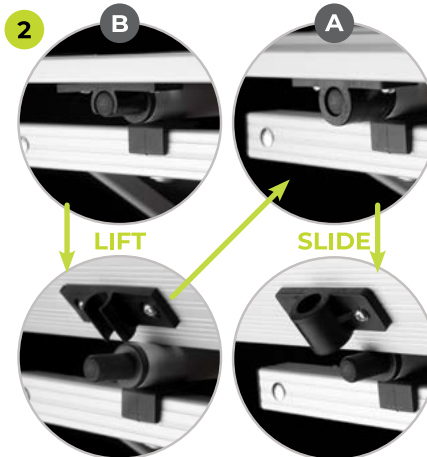


### PINCH POINTS

Keep fingers clear when folding. Follow all assembly instructions.



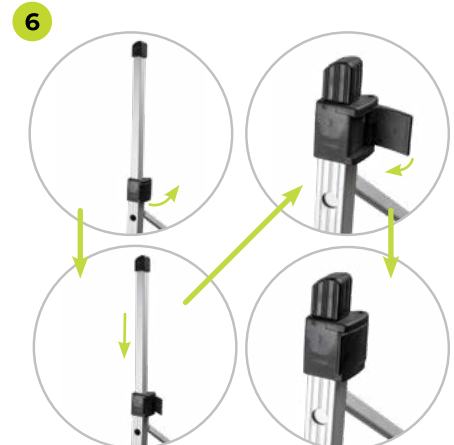
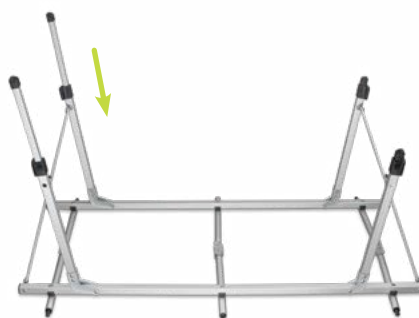
- 1** To remove the tabletop, **LIFT** section **B** first. Fold the slats towards sections **A** and **SLIDE** the tabletop off the frame.



- 4** Fold the tabletop as pictured and put it aside.



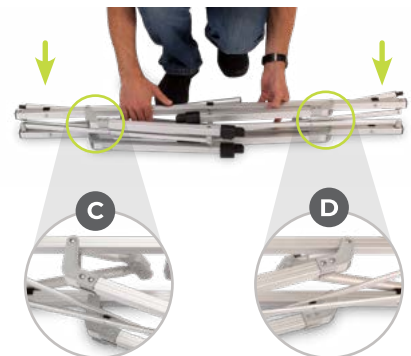
- 5** Flip the frame over to easily lower legs back into the framework. Follow step 6.



- 7** Turn the frame onto its side and fold legs towards the center.



- 9** Ensure the legs with the shorter hinge (**D**) folds in first.



**10**

### 2 Year Limited Warranty

We take pride in the quality and design of every ZEMPIRE table or cupboard, that's why our TABLES & CUPBOARDS come with a strong guarantee designed to protect you as our valued customer. ZEMPIRE will repair or replace this product, should it fail due to faulty materials or manufacture for a period of 2 years from the date you purchase.

For a full explanation of what is covered under this warranty please refer to our website [www.zempire.co.nz/warranty](http://www.zempire.co.nz/warranty).

### Care & Safety information:

- Do not stand on your table.
- Clean thoroughly after each use. Wash by hand with warm water and a soft towel or sponge.
- Do not use harsh cleaning chemicals.
- Leave the table to dry out completely before putting it away.
- Do not keep the table in direct sunlight or leave it in the rain.
- Store away from chemicals and moisture.

